



# Furniture Cooler

For design furniture and shelving systems in business or pleasure.  
Suitable for indoor and outdoor.







---

Timeless  
Functional  
Elegant

---



---

## Thoughtful design ...

The eye-catcher among functional furniture. For optimal cooling and unforgettable enjoyment. For business or pleasure.

Thoughtful details such as a subtle shadow gap on the front of the case, sidewalls in slate look and different wall thicknesses underline the timeless design and lend simple elegance and sophisticated feel to the product. High-quality steerable furniture rollers round off the appearance and allow comfortable use through simple maneuvering.

---



---

... meets lifestyle.

---



---

Three distinct color designs perfectly match different room concepts, be it elegant, rustic or trendy. In addition to three different colors, we also offer three models - from the standard version to fully equipped professional version with table and rail.

---



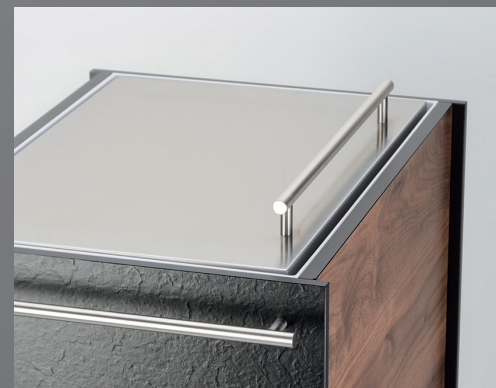
left: Furniture Cooler Navy Blue /  
Professional version with table and rail  
above : Furniture Cooler Aluminium Groove /  
Standard  
below: Furniture Cooler Walnut /  
with rail

# Easy to use

Our Integrated Coolers save the cold inside the cooler for several hours without connection to the mains. All variants are equipped with a clearly readable temperature display and have steerable furniture rollers with brakes. Each color version is available in the design with table and rail. The modules are also available separately as a retrofit kit.



Lockable table



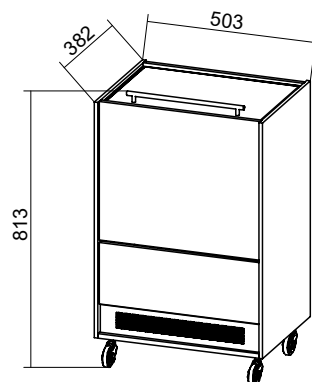
Temperature display



Steerable furniture rollers with brakes



# Technical specifications



Furniture Cooler Standard

## Order No.

35.6000.00.01 Walnut  
35.6000.01.01 Aluminium Groove  
35.6000.02.01 Navy Blue

**Voltage:** 230 V AC

**Power:** 150 W

**Current consum.** 0.6 A

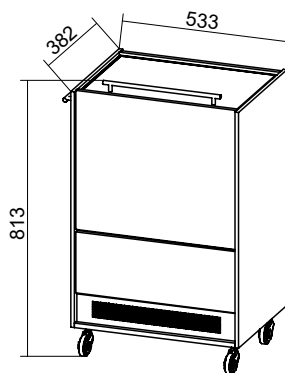
**Weight:** 30 kg

**Volume:** approx. 35 l

**Temperature range:** from + 12° C to + 4° C

**Housing:** Inner housing powder-coated aluminum, foamed with PU Integral, 40 mm semi-rigid foam, lid stainless steel brushed, cover frame and inner cover with ABS, steerable furniture rollers with brakes

**Refrigerant:** R134a



Furniture Cooler with Rail

## Order No.

35.6000.00.04 Walnut  
35.6000.01.04 Aluminium Groove  
35.6000.02.04 Navy Blue

**Voltage:** 230 V AC

**Power:** 150 W

**Current consum.** 0.6 A

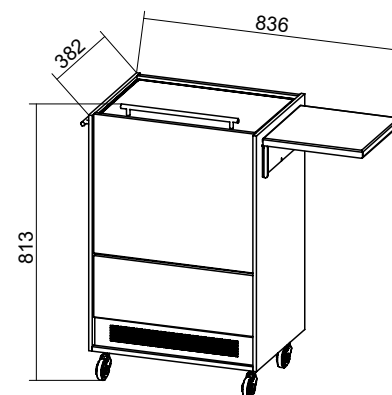
**Weight:** 30 kg

**Volume:** approx. 35 l

**Temperature range:** from + 12° C to + 4° C

**Housing:** Inner housing powder-coated aluminum, foamed with PU Integral, 40 mm semi-rigid foam, lid stainless steel brushed, cover frame and inner cover with ABS, steerable furniture rollers with brakes

**Refrigerant:** R134a



Furniture Cooler with Rail and Table

## Order No.

35.6000.00.02 Walnut  
35.6000.01.02 Aluminium Groove  
35.6000.02.02 Navy Blue

**Voltage:** 230 V AC

**Power:** 150 W

**Current consum.** 0.6 A

**Weight:** 30 kg

**Volume:** approx. 35 l

**Temperature range:** from + 12° C to + 4° C

**Housing:** Inner housing powder-coated aluminum, foamed with PU Integral, 40 mm semi-rigid foam, lid stainless steel brushed, cover frame and inner cover with ABS, steerable furniture rollers with brakes

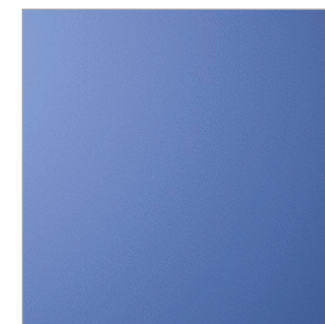
**Refrigerant:** R134a



Walnut

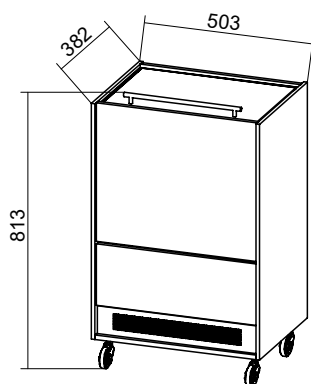


Aluminium Groove



Navy Blue

# Technical specifications



Furniture Cooler Standard

## Order No.

35.6002.00.01 Walnut

35.6002.01.01 Aluminium Groove

35.6002.02.01 Navy Blue

**Voltage:** 230 V AC

**Power:** 50 W

**Current consum.** 0.3 A

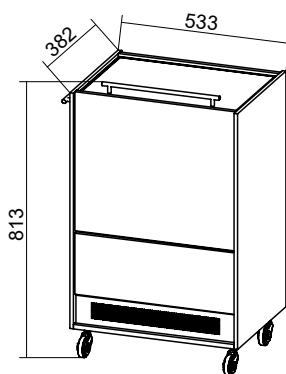
**Weight:** 30 kg

**Volume:** approx. 35 l

**Temperature range:** from + 12° C to + 4° C

**Housing:** Inner housing powder-coated aluminum, foamed with PU Integral, 40 mm semi-rigid foam, lid stainless steel brushed, cover frame and inner cover with ABS, steerable furniture rollers with brakes, power supply (Typ F)

**Refrigerant:** R600a



Furniture Cooler with Rail

## Order No.

35.6002.00.04 Walnut

35.6002.01.04 Aluminium Groove

35.6002.02.04 Navy Blue

**Voltage:** 230 V AC

**Power:** 50 W

**Current consum.** 0.3 A

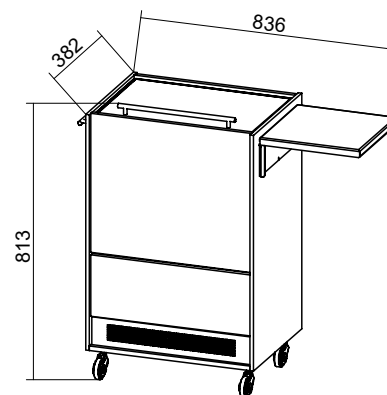
**Weight:** 30 kg

**Volume:** approx. 35 l

**Temperature range:** from + 12° C to + 4° C

**Housing:** Inner housing powder-coated aluminum, foamed with PU Integral, 40 mm semi-rigid foam, lid stainless steel brushed, cover frame and inner cover with ABS, steerable furniture rollers with brakes, power supply (Typ F)

**Refrigerant:** R600a



Furniture Cooler with Rail and Table

## Order No.

35.6002.00.02 Walnut

35.6002.01.02 Aluminium Groove

35.6002.02.02 Navy Blue

**Voltage:** 230 V AC

**Power:** 50 W

**Current consum.** 0.3 A

**Weight:** 30 kg

**Volume:** approx. 35 l

**Temperature range:** from + 12° C to + 4° C

**Housing:** Inner housing powder-coated aluminum, foamed with PU Integral, 40 mm semi-rigid foam, lid stainless steel brushed, cover frame and inner cover with ABS, steerable furniture rollers with brakes, power supply (Typ F)

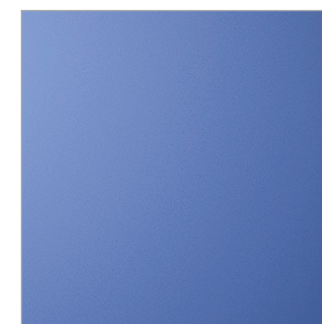
**Refrigerant:** R600a



Walnut



Aluminium Groove



Navy Blue





**TM Technischer Gerätebau GmbH**

Böttgerstraße 13

89231 Neu-Ulm

Germany

phone +49 (0) 731 / 9 74 21-0

fax +49 (0) 731 / 9 74 21-69

e-mail [vm@tmtech.de](mailto:vm@tmtech.de)

web [www.tmlifestyle.de](http://www.tmlifestyle.de)

**Contact TM Germany Sales**

spare parts +49 (0) 731 / 9 74 21-53

order transaction

manufacturer +49 (0) 731 / 9 74 21-52

customer service +49 (0) 731 / 9 74 21-41

fax +49 (0) 731 / 9 74 21-69